

- ✓ *Component monitoring*
- ✓ *Board detection*
- ✓ *Up to 80% energy saving*
- ✓ *Modular configurable*



Reflow Soldering Systems

551.10, 551.15 and 551.19



SYSTEC ENTWICKLUNG & FERTIGUNG

Technical description

■ The soldering system **551.10** is a new development made by SEF and combines the competence of more than 30 years in the manufacturing of reflow ovens with modern requirements regarding usability, low power consumption and interfaces for the communication with other devices.

The basic system is designed as a desk top model and is equipped with eight heating zones, 4 upper and 4 bottom zones. The heating zones emit convection heat with the help of hot air fans. The upper part of the heating chamber contains additionally a cooling zone and an exhaust hood at the inlet area as well as at the outlet area.

The transport of the PCBs follows via a mesh belt or pin chain conveyor. The usable working width is 405 mm. The operation of the soldering system is done with the help of a modern 7" touch panel. A 1-channel temperature profiler is integrated to check the soldering profile. The necessary thermocouple is included in the delivery.



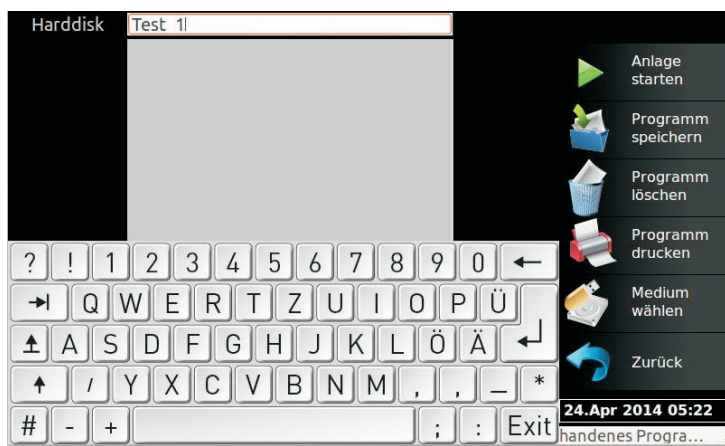
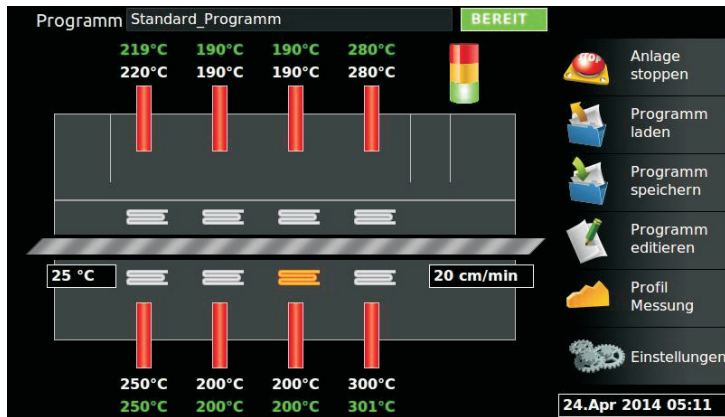
Individual personalization

The basic system can be upgraded with several options and thereby adapted to your personal requirements.

- **Cabinet**, height adjustable. Storage compartment can be closed with two doors
- **Lamp pole** (green, yellow, red) to show the status of the system
- **Pin chain conveyor**
- **Power save package** with
 - **Single board recognition** and
 - **Power down mode**: The system changes to standby mode with reduced heating power. When recognizing a board at the inlet, the conveyor stops, the oven is heating up to soldering temperature and then starts the conveyor again.
- **Communication package** consisting of SMEMA interface, PC interface, WLAN interface
- **Exhaust box**: in case you don't have an in-house exhaust system
- **Individual painting**
- External **temperature profiler set 570.80A** with three channels
- **Special version 551.15**: Here the cooling zone will be replaced by an additional heating zone so that the oven has 5 upper and 5 bottom heating zones. The cooling takes place by fans which will be mounted at the machine hood above the outlet area.

Technical description

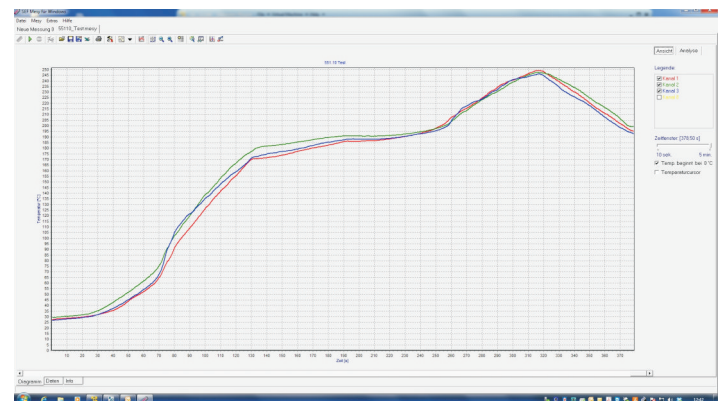
User interface, menu samples



Technical data 551.10

Length	2010 mm
Width	790 mm
Height - - incl. light pole	550 mm 710 mm
Weight	190 kg
Usable working width	405 mm
Active heating chamber length	850 mm
Inlet height	45 mm
Conveyor speed - - typical	15 cm/min – 90 cm/min 20 cm/min
Heating power	max. 12 kW
Connection values	3 x 230/400 VAC/N/PE 50 Hz with 16 A CEECON connector
Operation	7" Touchpanel

Typical soldering profile 551.10



The soldering system **551.19** offers a much higher production capacity but with same technical functions. The modular system has a basic design with 20 zones (10 upper, 10 bottom), which can be used as heating zones or cooling zones individually, for example 8 heating zones and two cooling zones.

Technical data 551.19

Length	3106 mm
Width	850 mm
Height - - incl. light pole	1270 mm 1 432,50 mm
Weight	474 kg
Usable working width	405 mm
Active heating chamber length	up to 2125 mm

Inlet height	45 mm
Conveyor speed - - typical	15 cm/min – 90 cm/min 45 cm/min
Heating power	max. 22 kW
Connection values	3 x 230/400 VAC/N/PE 50 Hz with 32 A CEECON connector
Operation	7" Touchpanel

Subject to technical changes.



Ready for Industry 4.0

- ✓ Automatical monitoring of:
 - ✓ all exhausters
 - ✓ all heating elements
 - ✓ conveyor motor
- ✓ Status message via LAN and WLAN
- ✓ Remote control via Smartphone or Tablet
- ✓ USB connection

SEF Systec GmbH
Kringelsburg 2a
21379 Scharnebeck
GERMANY

Tel.: +49 (0) 4136 909-0
Fax.: +49 (0) 4136 909-22
info@sef.de
www.sef.de



SYSTEC ENTWICKLUNG & FERTIGUNG